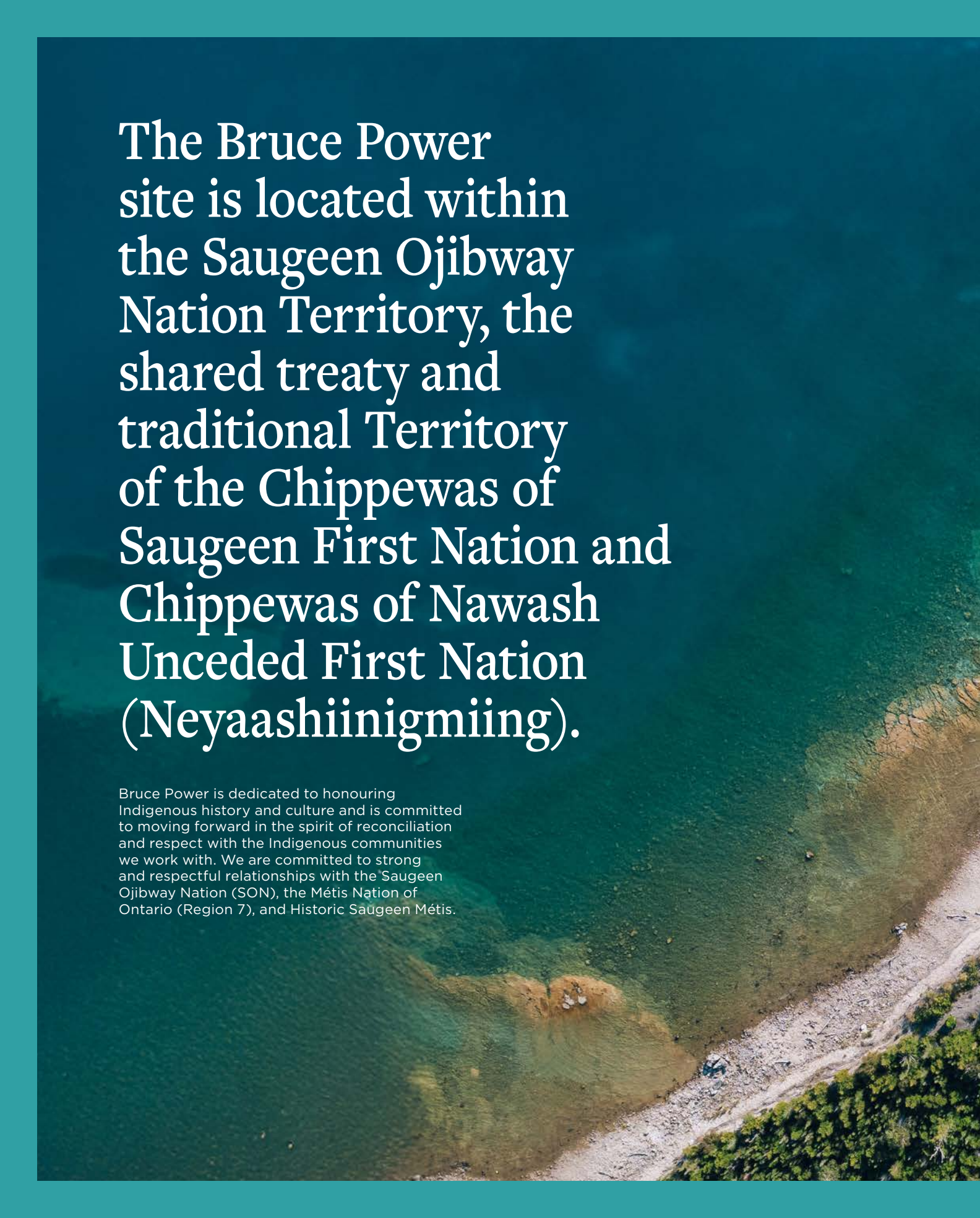




BrucePower[™]

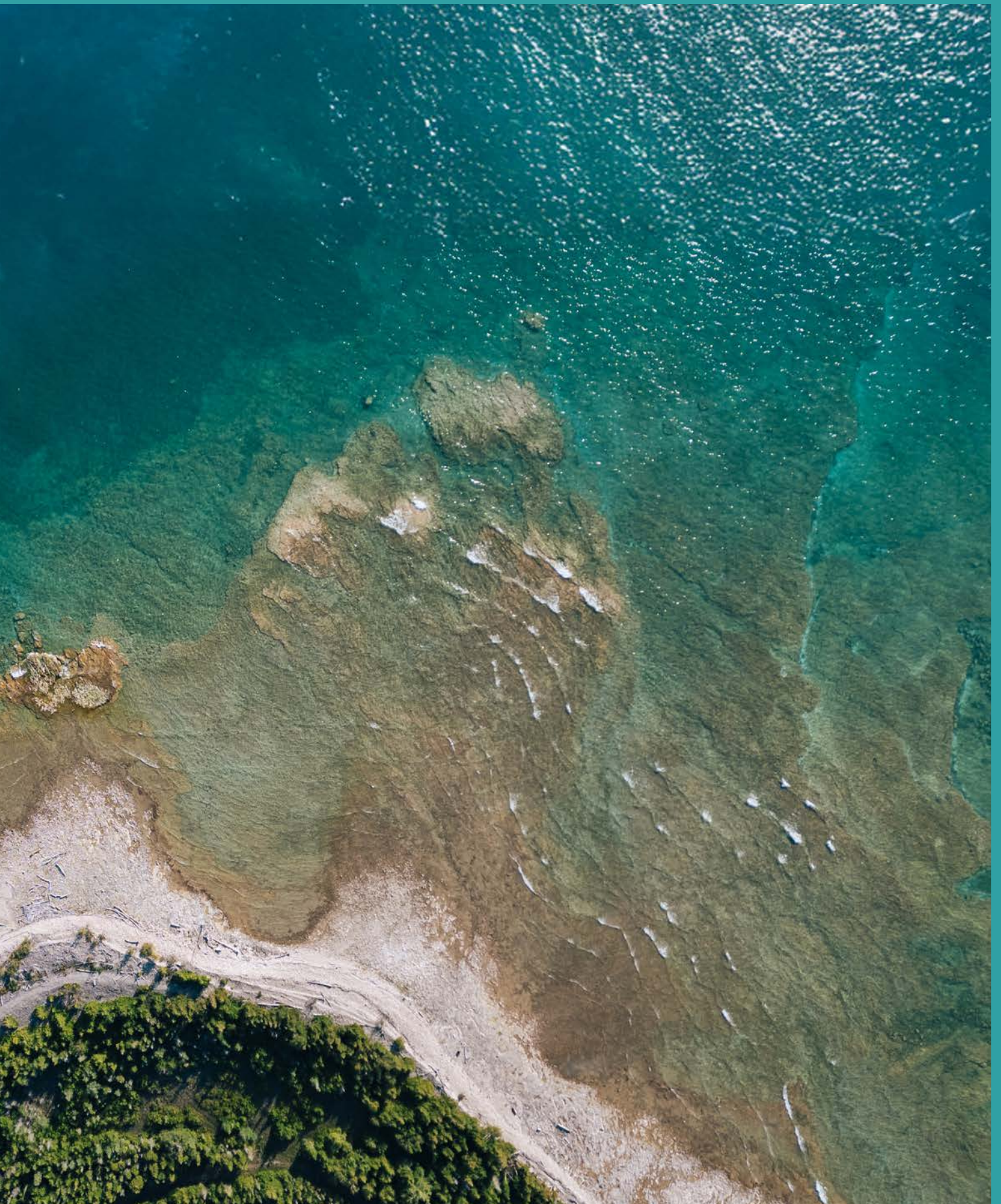
Sustainability Report 2026

Summary Update from the Bruce Power Environment
& Sustainability Oversight Committee

An aerial photograph of a river with a rocky shoreline and green vegetation. The water is a mix of dark blue and green, with a sandy and rocky bank on the right side. The background is a solid teal color.

The Bruce Power site is located within the Saugeen Ojibway Nation Territory, the shared treaty and traditional Territory of the Chippewas of Saugeen First Nation and Chippewas of Nawash Unceded First Nation (Neyaashiinigmiing).

Bruce Power is dedicated to honouring Indigenous history and culture and is committed to moving forward in the spirit of reconciliation and respect with the Indigenous communities we work with. We are committed to strong and respectful relationships with the Saugeen Ojibway Nation (SON), the Métis Nation of Ontario (Region 7), and Historic Saugeen Métis.





ABOUT BRUCE POWER

Bruce Power is an electricity company based in Bruce County, Saugeen Ojibway Nation Territory, Ontario. We are powered by our people. Our 4,200 employees are the foundation of our accomplishments and are proud of the role they play in safely delivering clean, reliable nuclear power to families and businesses across the province and cancer-fighting medical isotopes around the world. Bruce Power has worked hard to build strong roots in Ontario and is committed to protecting the environment and supporting the communities in which we live.



Bruce Power’s full 2026 [Sustainability Report¹](#) can be accessed by scanning the QR code.

CONTENTS

Message from the Chair	5
Bruce Power’s Approach to Sustainability	6
Green Financing.....	7
Materiality	7
Sustainability Metrics	7
Environment.....	8
Environment Management Program	8
Greenhouse Gas Emissions Management.....	9
Bruce Power’s Interim Greenhouse Gas Reduction Targets Relative to a 2019 Baseline	9
Bruce Power’s Scope 3 Greenhouse Gas Emission Category Breakdown.....	9
Climate Change Risk Management.....	10
Dose to Public	10
Waste Reduction and Diversion.....	10
Radioactive Waste Management	11
Water	11
Fish Protection and Environmental Response ..	11
Wildlife Habitat Council.....	12
Invasive Species Management: Phragmites Removal.....	12
People and Safety	13
Openness.....	13
Talent	14
Building a Culture of Respect and Belonging..	14
Employee Resource Groups.....	15
Ethics	15
Occupational Health and Safety	15
Emergency Preparedness	15
Products and Services.....	16
Canadian at Our Core.....	16
Isotopes.....	17
Gamzook’aamin Aakoziwin: Advancing Medical Isotopes Through Partnership	17
Community.....	18
Corporate Social Responsibility Program.....	18
Saugeen Ojibway Nation Community Development Fund.....	19
Bruce Power’s 2025 Corporate Social Responsibility Program	19
Advancing Community Development	20
Community Issues Identified	21
Independent Polling and Community Support ..	21
End Notes	22



MESSAGE FROM THE CHAIR

Building a bright future starts with charting a clear and ambitious path forward. Bruce Power continues to take meaningful steps to drive Ontario's energy future – supporting energy independence, strengthening climate action, and advancing a made-in-Canada nuclear industry that is recognized around the world.

Our mission remains steadfast: to safely provide clean, affordable, reliable power and cancer-fighting medical isotopes while strengthening our communities and protecting the environment. These values guide our decisions, our investments, and our long-term planning as we play a central role in meeting the province's growing energy needs.

Bruce Power owes much of its success to the surrounding communities that have supported us for decades. We do not take this trust lightly, and are committed to earning it through continued investment in programs, infrastructure, education, and local initiatives that help strengthen the region and create opportunities for people and businesses across Bruce, Grey, and Huron counties. Our commitment to Indigenous partnership and meaningful engagement remains equally strong, ensuring that our growth is inclusive and reflective of shared priorities.

As Ontario looks to build out its electricity system to meet growing energy needs, Bruce Power is building on our legacy. Through Life-Extension investments, Major Component Replacement, and our Project 2030 power-recovery initiatives, we are optimizing our site to deliver even more clean energy – supporting a stable, reliable grid and reducing the need for GHG-emitting generation. In parallel, we continue to advance the long-term planning and engagement work to build new nuclear on our site, through the Bruce C Impact Assessment. These steps are essential to securing long-term, affordable electricity for families and businesses while protecting the environment for future generations.

Our leadership extends beyond clean, reliable power. Bruce Power is a global leader in the production of medical isotopes used to diagnose and treat cancer, and we are proud to contribute to a resilient and innovative health-care supply chain. This work showcases the strength of Canada's nuclear sector and the potential of a homegrown industry committed to improving lives worldwide.

Environmental stewardship continues to guide our operations and planning. From conservation initiatives and biodiversity protection to the ongoing pursuit of reducing Scope 1 and 2 greenhouse gas (GHG) emissions by 2027, we hold ourselves accountable to high standards of transparency, monitoring, and continuous improvement.

This year's Sustainability Report outlines our progress across our core pillars of sustainability. It outlines our environmental performance, climate action, community investment, workforce development, Indigenous partnerships and engagement, sustainable supply chain practices, and green financing. It highlights the steps we are taking today to ensure that our operations support a cleaner, stronger, more resilient Ontario.

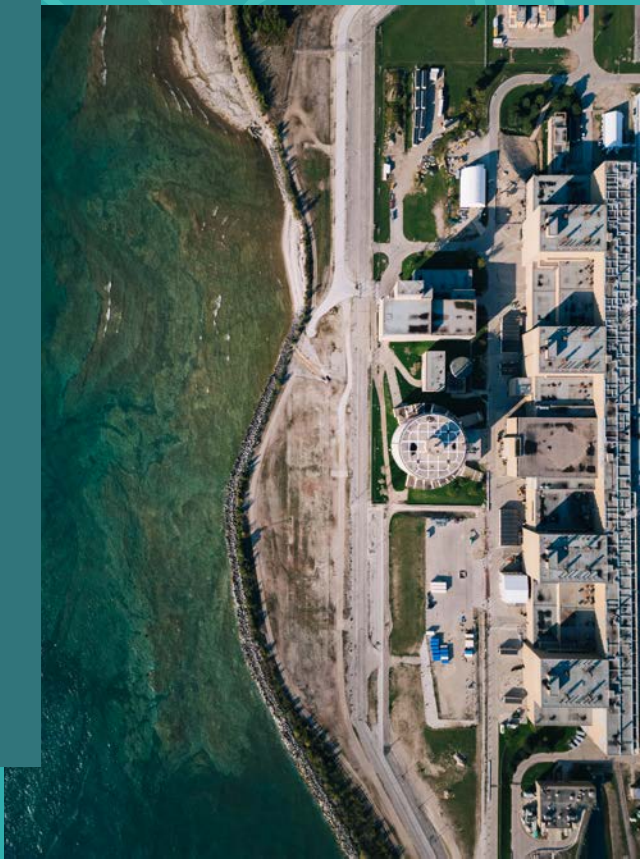
As we look ahead, Bruce Power will continue to lead with purpose. We will invest in the people, technologies, and partnerships that enable sustainable growth. We will deliver the clean energy the province needs to thrive. And we will continue to work hand-in-hand with our communities to build a bright future for generations to come.

James Scongack
Chair, Environment & Sustainability Oversight Committee, Bruce Power

Bruce Power's Approach to Sustainability

Nuclear energy remains a cornerstone of Ontario's clean electricity system, with Bruce Power playing a critical role in meeting the province's energy needs now and into the future. Delivering this value requires a strong commitment to responsible stewardship of people, communities, and the environment.

Guided by industry best practices and global standards, Bruce Power's Sustainability Program focuses on four key areas: Environment, People and Safety, Products and Services, and Community. The Program is overseen by the Environment & Sustainability Oversight Committee and the Board of Directors, ensuring sustainability-related risks and opportunities are integrated into business planning and operations. Bruce Power remains committed to continuous improvement, transparency, and delivering meaningful long-term value.





GREEN FINANCING

Bruce Power's Green Financing Framework (the Framework) aligns financing with sustainability objectives. Updated in 2023, the Framework expanded eligibility to include new nuclear technologies, in addition to the Life-Extension Program, including Major Component Replacement and Project 2030 initiatives.

The 2023 Framework received a Second Party Opinion from S&P Global Ratings and was assessed as 'Medium Green' under the Shades of Green analytical approach. S&P Global Ratings also indicated alignment with the Green Bond Principles, issued by the International Capital Markets Association, and the Green Loan Principles, issued by the Loan Market Association and Loan Syndications and Trading Association.

To date, Bruce Power has issued \$3.3 billion in Green Bonds, including \$950 million issued in December 2025. Allocation of proceeds and associated environmental impacts are disclosed annually in the [Green Bond Report](#).²

In addition, Bruce Power utilizes sustainability-linked financing instruments, including a Sustainability-Linked Loan and Sustainability-Linked Deposit, with performance measures tied to GHG reductions and inclusivity goals, supported by third-party verification.

MATERIALITY

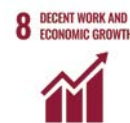
Bruce Power's materiality process identifies the environmental, social, and governance topics most significant to the business and its interested parties, ensuring sustainability efforts and disclosures remain focused and relevant. In 2025, an annual review confirmed that material topics remain unchanged from 2024. Guided by recognized sustainability frameworks, these topics continue to inform program priorities, Key Performance Indicators (KPIs), targets, and reporting.

SUSTAINABILITY METRICS

Bruce Power's Sustainability Report presents a focused set of quantitative and qualitative disclosures aligned with the Sustainability Program and informed by materiality. A broader set of metrics supports internal monitoring and decision-making, with public disclosures evolving over time to reflect changing expectations, materiality considerations, and data quality.

Disclosures are prepared using consistent, rigorous methodologies and are informed by leading frameworks and standards, including the Global Reporting Initiative (GRI), Sustainability Accounting Standards Board (SASB), Task Force on Climate-related Financial Disclosures (TCFD), and the United Nations Sustainable Development Goals (UN SDGs). These frameworks provide guidance in identifying priority topics and informing reporting practices, while supporting transparency and comparability.

Bruce Power has identified 12 UN SDGs that we believe will have the greatest influence in guiding ongoing efforts.



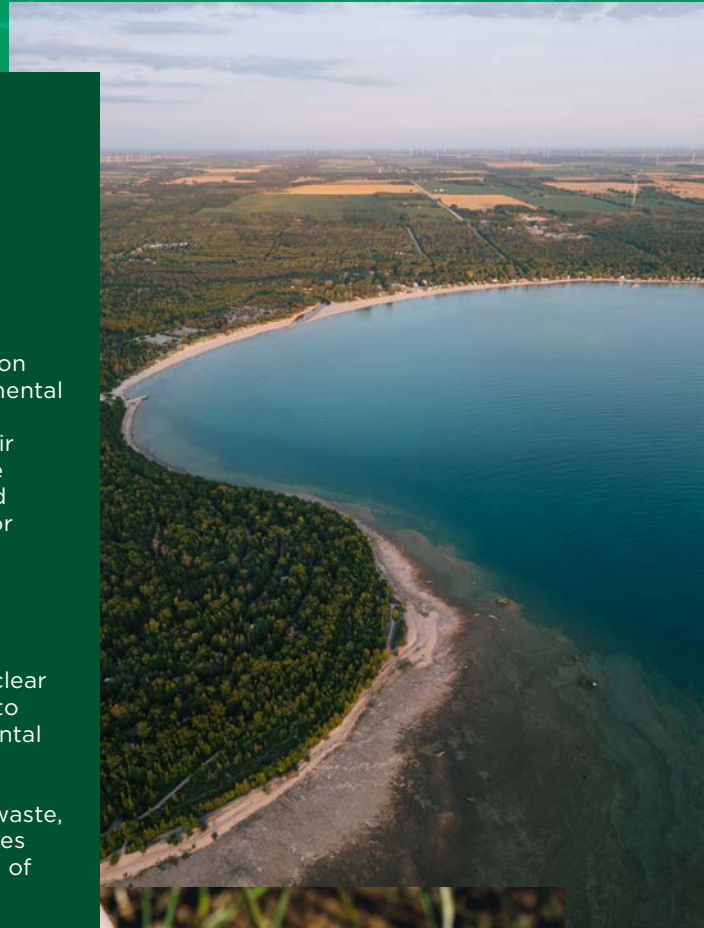
Environment

ENVIRONMENT MANAGEMENT PROGRAM

Bruce Power's environmental management approach is supported by an International Organization for Standardization (ISO) 14001-certified Environmental Management System, aligned with industry standards including the Canadian Standards Association (CSA) N288 series. The ISO 14001, Environmental Management Systems Standard, provides a framework for organizations to improve their environmental performance and protect the environment. Bruce Power has implemented and maintained alignment with ISO 14001 for 19 years, and successfully completed a surveillance audit in 2025, with the next recertification audit planned for 2026.

Environmental safety and responsibility are woven into all aspects of the company's nuclear safety culture, and Bruce Power commits to meet or exceed all relevant legal environmental requirements. The company is committed to environmental protection through strong management of emissions, effluents, and waste, supported by robust spill mitigation measures to ensure effective containment and control of contaminants to prevent pollution.

Learn more in our [2025 Environmental Protection Report](#).³



GREENHOUSE GAS EMISSIONS MANAGEMENT

Bruce Power provides large volumes of non-carbon emitting electricity that is critical to Ontario’s GHG reduction objectives, while continuing to minimize emissions from its own operations to meet our Net Zero 2027 commitments. Net GHG reduction targets apply to all Scope 1 and 2 GHG emissions and are measured against a 2019 baseline, with interim targets through 2027 to support steady progress. In 2025, we achieved our target of 50 per cent net reduction.

Emissions-reduction efforts focus on operational improvements and energy efficiency, optimized building use and energy sources, fleet and infrastructure projects, and the use of Ontario Clean Energy Credits (CECs) and carbon offsets to address emissions where further reductions are not feasible.

At the same time, Bruce Power is advancing Project 2030, an initiative launched in 2021 to increase electrical output and achieve a site net peak capacity of 7,000 MW by the early 2030s through asset optimization and innovation. This increase — equivalent to adding a ninth large-scale reactor without new infrastructure — strengthens Ontario’s clean energy system and is supported in part by proceeds from Bruce Power’s green bond issuances under the [Green Financing Framework](#).⁴

Clean Energy Credits and Carbon Offsets

As a leading producer of non-carbon emitting electricity in Ontario, Bruce Power offers CECs to support corporate environmental and sustainability goals. CECs are electronic certificates representing one megawatt-hour



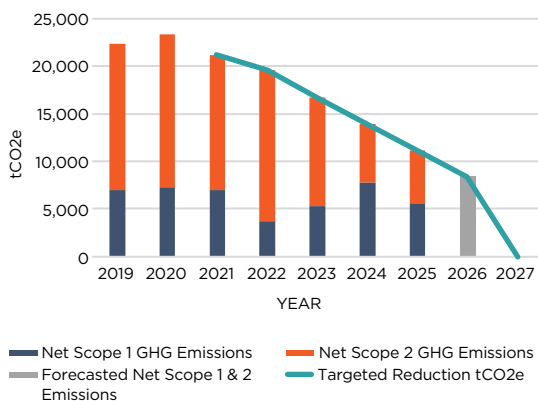
(MWh) of clean electricity, including nuclear generation. Organizations can purchase and retire CECs to demonstrate clean electricity use and address Scope 2 GHG emissions on a voluntary basis. In 2025, Bruce Power issued 643,320 CECs (MWh) in the registry. More information can be found on Bruce Power’s [CEC webpage](#).⁵

We were able to utilize CECs to “offset” the emissions associated with our Scope 2 electricity consumption, retiring 289,349 CECs (MWh) which was equivalent to the avoidance of 15,625 tonnes of carbon dioxide equivalent (tCO₂e). Additionally, 2,537 tCO₂e in carbon offsets from the CSA Clean Projects Registry were retired towards the 2025 emissions reduction target.

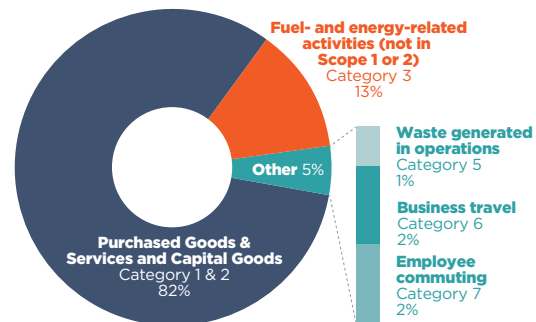
Scope 3 GHG Emissions

Scope 3 GHG emissions are indirect emissions that occur across Bruce Power’s value chain from sources not owned or controlled by the company. These emissions arise from supply chain activities that support operations and Life-Extension Program work, as well as activities that occur as a consequence of Bruce Power’s operations.

Bruce Power’s Annual Net Scope 1 and 2 GHG Emissions and Forecasted Emissions to Net Zero in 2027



Breakdown of Bruce Power’s Scope 3 Greenhouse Gas Emissions by Category



Applicable categories less than 0.1%: 4-Upstream transportation and distribution; 9-Downstream transportation and distribution; 10-Processing of sold products; 11-Use of sold products; 12-End-of-life treatment of sold products; 13-Downstream leased assets



CLIMATE CHANGE RISK MANAGEMENT

Bruce Power goes beyond regulatory compliance by advancing science-based climate and environmental research to strengthen operational resilience and environmental protection. Working with regulators, Indigenous Nations and communities, academia, industry partners, and regional stakeholders, Bruce Power has assessed climate change impacts on Lake Huron and extended this understanding across the Bruce, Grey, and Huron regions, with a focus on municipal, agricultural, and ecological systems.

In 2025, Bruce Power completed a Climate Vulnerability Assessment (CVA) aligned with the Institute of Nuclear Power Operations (INPO) 24-002 and Electric Power Research Institute’s (EPRI) [Climate Resilience and Adaptation Initiative](#) (READi).⁷ Developed with support from Kinectrics and accepted by INPO, the CVA identifies local climate hazards, assesses equipment vulnerabilities, and enables Bruce Power to develop strategic action plans to strengthen governance, mitigation planning, and long-term site reliability.

Bruce Power continues to monitor changing environmental conditions and share climate insights through initiatives such as [The Climate Project](#), an open regional climate data hub, and through participation in EPRI climate resilience programs. In 2025, Bruce Power also launched a Thermal Excellence Strategy, advancing monitoring and research on lake conditions, ecosystem interactions, and climate-driven change to support informed actions to mitigate impacts of thermal effluent and enhance environmental protection.



[The Climate Project](#) is a regional climate data hub.

DOSE TO PUBLIC

As part of regulatory requirements, Bruce Power must calculate and report its contribution to radiological exposure dose to members of the public on an annual basis.

For the thirty-fourth consecutive year, Bruce Power’s contribution to the annual dose of a member of the public is less than the lower threshold for significance (less than 10 microsieverts per year) and is considered de minimus.

WASTE REDUCTION AND DIVERSION

In 2025, Bruce Power achieved a 74 per cent waste diversion rate, exceeding corporate targets. Approximately 71 per cent of waste material was recycled through multiple recycling streams and an additional 3 per cent was composted. Bruce Power’s Conventional Waste Program continues to go beyond regulatory requirements through the implementation of additional source-separation initiatives, including composting, e-waste, batteries, Styrofoam, hard hats, binders, and confidential shredding. Bruce Power continues to identify opportunities to further improve waste reduction and diversion performance.



Friendlier Program

In 2025, Bruce Power launched a reusable container program at the Support Centre and Bruce B cafeterias in partnership with [Friendlier](#),⁸ replacing disposable food packaging with reusable containers. During the year, 12,692 reusable containers were used across the Support Centre and Bruce B cafeterias.

RADIOACTIVE WASTE MANAGEMENT

Bruce Power is committed to minimizing both radioactive and non-radioactive waste through robust waste management programs that focus on waste elimination and volume reduction. Activities that generate radioactive waste are assessed to reduce waste volumes wherever possible. Bruce Power takes full accountability for the radioactive waste it generates. Bruce Power fully funds and manages the safe storage and ultimate disposal of all radiological waste from Bruce A and Bruce B, working in partnership with Ontario Power Generation (OPG). All waste is safely stored on site in OPG-owned facilities on an interim basis until long-term disposal facilities become available.

More information can be found on Bruce Power's [Fact Sheet on Waste Management](#).⁹

WATER

The cold, deep water of Lake Huron supports Bruce Power's domestic and operational needs, including fire protection, demineralization, and once-through cooling systems. More than 99.99 per cent of water drawn is returned to the lake, under a highly regulated permitting framework that protects water quality.

In 2025, Bruce Power's net annual water consumption from Lake Huron was 1.87 million cubic meters, staying below our targeted corporate threshold and below consumption in 2024, reflecting efficient water stewardship while supporting safe and reliable operations.

Ongoing monitoring and environmental programs help ensure the protection of water quality and aquatic habitat.

FISH PROTECTION AND ENVIRONMENTAL RESPONSE

In 2025, Bruce Power experienced a significant gizzard shad impingement event linked to rapidly changing winter weather and lake conditions. In response, Bruce Power worked with regulators, environmental experts, and Saugeen Ojibway Nation (SON) to strengthen our understanding of this event and enhance fish-protection measures, including, mitigation measures, enhanced monitoring, operational adjustments during higher-risk conditions, and clearer early-warning and decision-making processes. Longer-term actions included investments in advanced monitoring technologies, targeted infrastructure upgrades to reduce fish ingress (improved barriers and deterrents), and collaborative research to better understand changes in Lake Huron, reflecting a commitment to continuous improvement, environmental stewardship, and transparency.



INVASIVE SPECIES MANAGEMENT: PHRAGMITES REMOVAL

Invasive Phragmites poses a significant threat to coastal wetlands along Lake Huron. Through collaboration with the Invasive Phragmites Control Centre and local partners, Bruce Power has led sustained control efforts at the provincially significant Baie du Doré wetland. Following multi-year adaptive management, high- and medium-density Phragmites have been eliminated, with the site now in a maintenance phase. Bruce Power has also supported regional capacity-building and control efforts in surrounding shoreline communities, contributing to improved coastal wetland health and long-term biodiversity outcomes.



WILDLIFE HABITAT COUNCIL

In 2025, Bruce Power's biodiversity program received Gold-level Wildlife Habitat Council (WHC) Certification through 2027, recognizing leadership in environmental stewardship, monitoring, and community engagement. The WHC-certified program supports onsite habitat conservation, environmental monitoring, and education initiatives across the Bruce site.

As part of the recertification process, Bruce Power also received the 2025 Tandem Global "Other Species" Project Award for the Bothwell's Creek restoration project, supporting fish habitat improvement and stream connectivity.

For more information on the company's biodiversity commitments, view our corporate [Biodiversity Policy](#).¹⁰



People and Safety

OPENNESS

Bruce Power is committed to engaging with the community in an open, transparent, and meaningful way. We conduct our business ethically, respectfully, and safely, and strive to maintain positive relationships through open communication with those who have an interest in our business.





TALENT

We are dedicated to attracting, developing, and retaining top talent, with a continued focus on strengthening leadership programming and creating equitable opportunities for growth. We regularly review our talent programs, including promotions and succession planning, to support employee development. Some highlights from 2025 include:

- Advanced the Diversity Recruitment Strategy to support a sustainable future workforce.
- Strengthened the Indigenous Employment Program, supporting the hiring of Indigenous talent across the nuclear sector and advancing reconciliation.
- Enhanced the use of Employment Equity data to track hiring outcomes, identify representation gaps, and inform new HR sustainability KPIs.
- Formalized inclusive interview practices by requiring diverse representation on interview panels.
- Continued to strengthen talent pipelines through partnerships with post-secondary institutions, trade unions, Build a Dream, and Skills Ontario to support long-term workforce sustainability.

BUILDING A CULTURE OF RESPECT AND BELONGING

At Bruce Power, we are committed to fostering an inclusive workplace culture where employees feel supported, engaged, and empowered. Through employee engagement mechanisms, open feedback channels, and learning-based initiatives, we continue to strengthen culture and connection across the organization. Some highlights from 2025 include:

- Introduced expectant-parent parking to support employee well-being and workplace accommodation.
- Supported Early Childhood Education scholarships to strengthen access to childcare in Bruce County and advance work-life balance for working parents.
- Hosted development-focused networking and technical tours for women across the organization to support career growth and readiness for future roles.
- Engaged employees in learning-based cultural observances, including Indigenous History Month, Black History Month, Pride, International Women's Day, and the 16 Days of Activism.
- Hosted Take Your Kids to Work Day, supporting early awareness of career pathways and strengthening connections with local communities.

EMPLOYEE RESOURCE GROUPS

At Bruce Power, we continue to leverage the support and guidance of our Employee Resource Groups (ERGs) to advance inclusion, remove barriers, and foster belonging. Led by employee volunteers, ERGs support personal and professional development, networking, and community engagement.

We proudly support four ERGs: the Gender & Sexuality Alliance (2SLGBTQAI+), Indigenous Network, Mosaic (Racialized Employees), and the Women's Forum. Some highlights of ERG initiatives in 2025 include:

- Delivered educational sessions, cultural engagement activities, and learning-based observances to strengthen awareness and inclusion across the organization.
- Facilitated technical tours to expand access to operational areas and increase understanding of Bruce Power's business and operations.
- Hosted networking and professional development opportunities to support career growth and leadership readiness.
- Participated in community events and outreach activities across the regions where Bruce Power operates, strengthening connections with local communities.

ETHICS

At Bruce Power, ethical values such as integrity, respect, honesty, and transparency guide our daily actions and are reflected in our policies and procedures, which are regularly reviewed and updated to align with best practices. The Code of Conduct, Supplier Code of Conduct, and [Code of Conduct Principles](#)¹¹ set clear expectations for acceptable behaviour and support the strong ethical workplace culture we have established.

OCCUPATIONAL HEALTH AND SAFETY

Since 2022, Bruce Power has been transitioning from an event absence mindset to an energy-based safety approach centered on the presence and effectiveness of controls. This shift introduced consistent, risk-based event classification and widespread use of the Energy Wheel, along with the integration of energy-based principles into work planning, a focus on "Stuff That Kills You (STKY)," and

more deliberate use of targeted direct controls. In 2024, the company further advanced this strategy by joining the Edison Electric Institute's Power to Prevent Serious Injuries and Fatalities (SIF) working group, aligning with industry peers to drive leading practices in eliminating serious injuries and fatalities.

By 2025, the focus moved from program deployment to embedding energy-based safety at the field level. STKY concepts were expanded to workers through dynamic learning, and teaching engagements aimed at improving hazard recognition and control application at the point of work. These efforts strengthened the connection between planning and execution and supported a Severe Injury Rate of 0.07 for the year. Looking ahead to 2026, the Energy Based Safety Excellence Plan emphasizes proactive identification of high-energy hazards, verification of direct controls, and improved consistency of high-energy observations and safety data - all reinforcing Bruce Power's commitment to continuous improvement and the prevention of serious injuries and fatalities.

For more information, view [Bruce Power's Occupational Health and Safety Policy](#).¹²

EMERGENCY PREPAREDNESS

Bruce Power is prepared for a wide range of potential emergency events, including the highly unlikely nuclear emergency, through an All-Hazards approach to emergency planning. Maintaining a robust Emergency Response Program reflects Bruce Power's commitment to Safety First and social responsibility.

The program includes dedicated on-site staff, on-call responders, and additional personnel who can be mobilized to support the site and surrounding communities. Program effectiveness is evaluated through more than 50 drills each year and major exercises, with oversight by Canada's nuclear regulator, which has consistently rated Bruce Power's emergency response capabilities as fully satisfactory.

In 2025, Bruce Power also hosted an Emergency Management Performance Evaluation led by the World Association of Nuclear Operators (WANO), which confirmed overall program effectiveness with no Areas for Improvement identified, providing independent validation of emergency preparedness.

Products and Services

CANADIAN AT OUR CORE

Bruce Power is proud of the role it plays in providing reliable made-in-Canada electricity and cancer-fighting medical isotopes with a domestic supply chain that has an economic impact felt across the Clean Energy Frontier region of Bruce, Grey, and Huron counties, Ontario, and Canada. The company launched the Canadian at our Core campaign in 2025, committing to continue to promote the made in Ontario and Canada nuclear industry and urging its partners and suppliers to buy local and buy Canadian. Closer to home in the Clean Energy Frontier Region of Bruce, Grey and Huron Counties, Bruce Power is encouraging suppliers, employees, and the community to shop local to support the economy.





ISOTOPES

Bruce Power continues its long-standing role as a global leader in the production of medical isotopes, supporting health-care systems worldwide while generating clean electricity. Medical isotopes produced at Bruce Power, including cobalt-60 and lutetium-177, play a critical role in sterilizing medical devices and enabling targeted cancer therapies.

Bruce Power continues to advance and expand its Isotope Production System to support reliable lutetium-177 production, building on capacity enhancements implemented in recent years. In 2025, Bruce Power advanced plans to further grow its isotope program, supporting Ontario's position as a global hub for medical isotopes.

Through collaboration with health-care partners, research organizations, and the SON, Bruce Power continues to strengthen long-term isotope supply while creating shared economic and social benefits.



GAMZOOK'AAMIN AAKOZIWIN: Advancing Medical Isotopes Through Partnership



As global medical isotope supply becomes increasingly constrained, Bruce Power is positioned to provide a long-term, reliable source of cancer-fighting medical isotopes through its Life-Extension Program to 2064. In partnership with IsoGen and SON, Bruce Power continues to expand the Isotope Production System, enabling scalable production of lutetium-177 and other future isotopes.

In December 2025, Bruce Power and SON finalized a historic \$250-million expansion of their partnership under Gamzook'aamin aakoziwin ("We are teaming up on the sickness"), adding cobalt-60 to the collaboration and establishing SON as a limited partner. This agreement strengthens Ontario's role as a global isotope production hub, supports the future of precision medicine, and advances economic reconciliation by creating lasting benefits for the Chippewas of Saugeen and Chippewas of Nawash Unceded First Nations.



**Services and
materials spent
in 2025:**

85.6%
in Ontario

91%
in Canada

Community

CORPORATE SOCIAL RESPONSIBILITY PROGRAM

Bruce Power delivers clean, reliable electricity to Ontario and cancer-fighting medical isotopes worldwide, while operating within and alongside the Bruce, Grey, and Huron region. Many of our employees live in the communities where we work, and we recognize the importance of contributing positively to the region that supports our operations.

Bruce Power is able to support the surrounding communities through its Corporate Social Responsibility (CSR) Program, which supports community well-being, environmental stewardship, and Indigenous community priorities. The CSR Program is delivered through three funding streams:

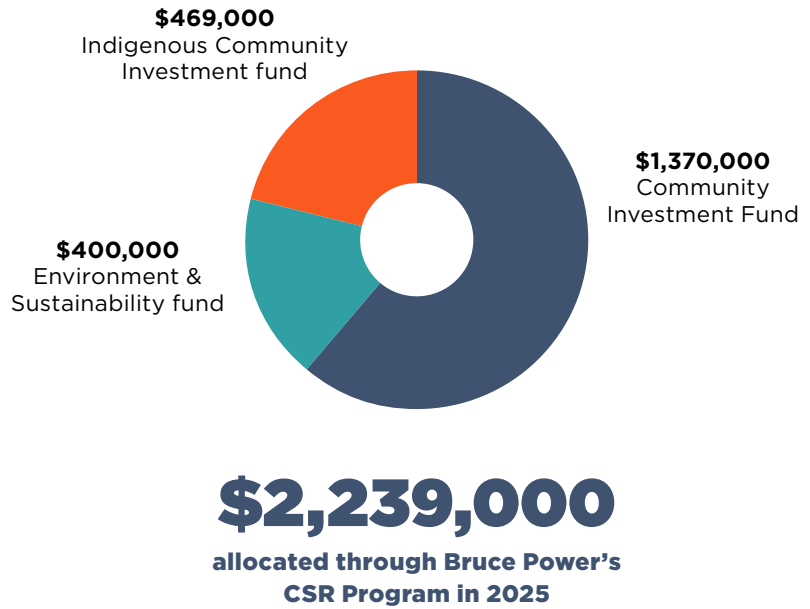
- Community Investment Fund
- Environment & Sustainability Fund
- Indigenous Community Investment Fund

More information, including how to apply for funding, is available on [Bruce Power's Corporate Social Responsibility webpage](#).¹³





BRUCE POWER'S 2025 CORPORATE SOCIAL RESPONSIBILITY PROGRAM



SAUGEEN OJIBWAY NATION (SON) COMMUNITY DEVELOPMENT FUND

In 2025, Bruce Power launched the SON Community Development Fund, a new program that encourages participation from key suppliers to support community-led priorities in the SON and Nawash communities. The inaugural distribution of \$1.7 million, delivered in the third quarter of 2025, supported a range of initiatives including major community infrastructure projects, health and wellness services, housing development, and food security.

Funded projects included improvements to community facilities, such as the Nawash Arena Project and the Saugeen Amphitheatre Restoration Project, as well as health focused initiatives serving SON members. In addition to financial contributions, the program promotes in-kind support and volunteerism, helping to strengthen relationships and foster long-term partnerships with SON communities.





ADVANCING COMMUNITY DEVELOPMENT

Bruce Power works with many interested parties in the community to advance economic development and innovation in the region and to build on the momentum underway.



The Clean Energy Frontier program is funded by Bruce Power and delivered in collaboration with the Nuclear Innovation Institute. The program supports economic development initiatives that strengthen the region's clean energy leadership. From supply chain growth to workforce readiness and community development, the Clean Energy Frontier program provides municipal leaders and local organizations with tools, data, and context they need to plan for growth and opportunity. More information is available on the [Nuclear Innovation Institute's Clean Energy Frontier webpage](#).¹⁴



Through Bruce Power's Community Investment Fund and Supplier Sponsorship Program, Bruce Power and its supplier partners provide support for essential priorities such as health care and mental health services, affordable and attainable housing, food security through food banks and meal programs, recreational facilities, and community and cultural initiatives.

In 2025, Bruce Power made a \$1 million commitment to the Well Community Collective, supporting the delivery of integrated, youth-focused wellness hubs in Goderich, Exeter, and Listowel. These hubs provide free, walk-in access to mental health, addiction, primary care, and social supports for youth aged 12-25.



COMMUNITY ISSUES IDENTIFIED

Through ongoing engagement and independent polling, Bruce Power works with interested parties to understand and respond to issues that matter most to the community, including economic opportunity, health care, and housing affordability.

Bruce Power operates in Bruce, Grey, and Huron counties, alongside a growing nuclear supply chain, research organizations, and critical electricity infrastructure that supports Ontario's future energy needs. Through its multi-billion-dollar investment program, Bruce Power continues to support local employment and economic development, helping strengthen the regional economy and position the area to support next-generation nuclear technology.

Bruce Power also contributes to local health care, with approximately \$5.25 million invested in hospital foundations and health initiatives between 2019 and 2025. In 2025, Bruce Power announced a donation of \$500,000 toward the MRI machine for Kincardine's hospital as part of the hospital redevelopment program. Bruce Power had previously committed \$1.5 million to the Kincardine Hospital Redevelopment Capital Campaign, while an additional \$500,000 was committed from supplier partners. Bruce Power also donated \$450,000 to Municipalities of Kincardine and Saugeen Shores to support Emergency Room (ER) availability (\$150,000 per year from 2024-2026) with \$25,000/year going directly to each hospital for ER support programs.

To help address housing affordability and cost-of-living pressures, Bruce Power supported affordable housing initiatives in Bruce and Huron counties in 2025 and continues to partner with organizations, such as Habitat for Humanity Grey Bruce to support local housing needs.

INDEPENDENT POLLING AND COMMUNITY SUPPORT

Bruce Power regularly commissions independent polling to understand community perspectives in Bruce, Grey, and Huron counties. Results from 2025 show strong local support for Bruce C, with 91 per cent of residents indicating that exploring potential site expansion would be good for the community and 86 per cent supporting new nuclear development. Support for refurbishing existing nuclear facilities to meet future electricity demand remained high at 92 per cent.

Community confidence in Bruce Power also remains strong, with 95 per cent of residents familiar with the company viewing it as a good community citizen, 93 per cent agreeing Bruce Power is positively involved in the community, and 96 per cent expressing confidence in the safe operation of the Bruce site.

More information can be found in our news release: [Independent polling reveals 9 in 10 residents in region believe proposed Bruce C Project would be good for community.](#)¹⁵

ENDNOTES

- 1 <https://www.brucepower.com/publications/bruce-power-sustainability-report-2026/>
- 2 <https://www.brucepower.com/green-financing-framework/>
- 3 <https://www.brucepower.com/wp-content/uploads/2026/05/B-REP-07000-00019-R000-EPR-2025-Accessible.pdf>
- 4 <https://www.brucepower.com/green-financing-framework/>
- 5 <https://www.brucepower.com/cec/>
- 6 <https://www.brucepower.com/what-we-do/a-cleaner-tomorrow/environment-policy/>
- 7 <https://www.epri.com/research/sectors/readi>
- 8 <https://www.friendlier.com/>
- 9 https://www.brucepower.com/wp-content/uploads/2023/07/2301881-Bruce-Power-Facts-Waste-Management_R000_AX.pdf
- 10 <https://www.brucepower.com/what-we-do/a-cleaner-tomorrow/biodiversity-policy/>
- 11 <https://www.brucepower.com/for-employees/code-of-conduct-principles/>
- 12 <https://www.brucepower.com/safety-first/occupational-policy/>
- 13 <https://www.brucepower.com/in-the-community/corporate-social-responsibility/>
- 14 <https://www.nuclearinnovationinstitute.ca/clean-energy-frontier>
- 15 <https://www.brucepower.com/2026/02/05/independent-polling-reveals-9-in-10-residents-in-region-believe-proposed-bruce-c-project-would-be-good-for-community/>



177 Tie Rd., Tiverton, Ontario, Canada NOG 2T0

www.brucepower.com